

Materials Needed	Procedure Overview
<ul style="list-style-type: none"> • Microfiber suede inside and outside grip patches • Shrink/plastic wrap (if available) • Heat gun (or hair dryer) 	<ul style="list-style-type: none"> • Remove old grips and any glue residue • Install replacement suede grip patches • Set oar length as appropriate

Note: Microfiber suede grips are designed as a wearing item that will require regular inspection and maintenance. The main advantage of microfiber suede grips is that changing the patches is very easy, and provides a grip that performs well in a wide range of conditions. In our experience the average lifespan of suede patches during regular use is approximately one year, but is dependent on many factors such as heat, humidity, and cleanliness. Athletic tape applied to fingers is very abrasive to the suede material and will decrease the life of grip.

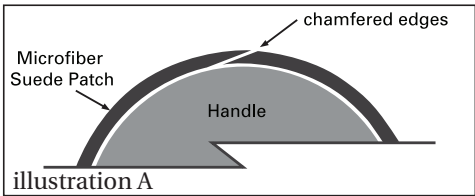
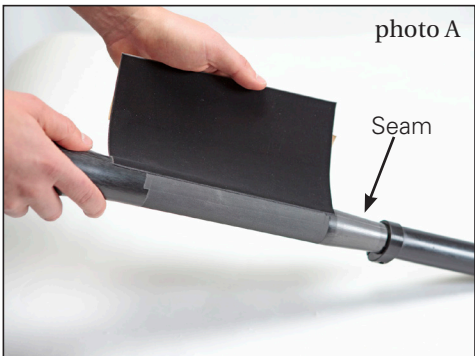
INSIDE SWEEP GRIP

Preparation

1. Support oars in V-blocks.
 2. Heat the entire suede patch area with a heat gun or hair dryer. The glue will release from the handle more readily when warm.
 3. Slowly peel the suede patch from the handle. Remove any remaining glue, which can usually be rubbed off with your fingers. For stubborn areas, dab the glue side of the removed patch on and off the residue that you wish to remove.
- Note:** Do not use solvents, cleaners or sandpaper to remove suede grips or glue.

Procedure

1. Align the peeled edge parallel with the handle, so that the seam is opposite the grip clamp (facing towards the rower during the drive). Firmly press down along the chamfered edge. See photo A.
2. Peel away the remaining backing paper and wrap the suede patch around the handle. The long chamfered edge should land directly onto the other, creating a smooth seam. See illustration A. Firmly squeeze all areas of the patch to ensure proper adhesion.



Procedure continued

3. If possible, use shrink/saran wrap to tightly wrap the patch and leave it overnight. This helps to improve the bond between the new patch and handle. See photo B.



photo B

OUTSIDE SWEEP GRIP

Preparation

1. Support oars in V-blocks.
2. Heat the entire suede patch area with a heat gun or hair dryer. The glue will release from the handle more readily when warm.
3. Slowly peel the suede patch from the handle. Remove any remaining glue, which can usually be rubbed off with your fingers. For stubborn areas, dab the glue side of the removed patch on and off the residue that you wish to remove.

Note: Do not use solvents, cleaners or sandpaper to remove suede grips or glue.

Procedure

1. Peel away the backing paper along one of the chamfered edges of the grip patch.
2. Align the peeled edge parallel with the handle, so that the seam is opposite the grip clamp (facing towards the rower during the drive). Also make sure the outside edge of the patch is flush against the outside edge of the grip core. Firmly press down along the chamfered edge. See photo C.
3. Peel away the remaining backing paper and wrap the patch around the plastic grip core. The chamfered edge should land directly onto the other, creating a smooth seam. See illustration A above. Firmly squeeze all areas of the patch to ensure proper adhesion.
4. If possible, use shrink/saran wrap to tightly wrap the patch and leave it overnight. This helps to improve the bond between the new patch and grip core. See photo B above.

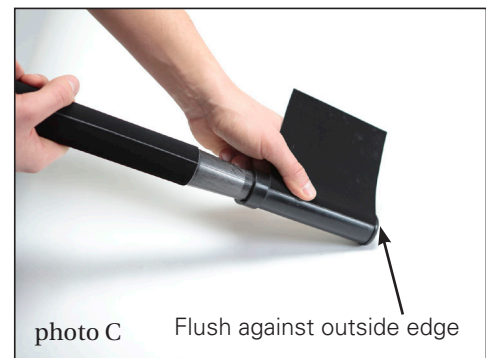


photo C Flush against outside edge

Materials Needed	Procedure Overview
<ul style="list-style-type: none"> • Microfiber suede inside and outside grip patches • Shrink/plastic wrap (if available) • Utility knife • 120 grit or higher sandpaper • Flathead screwdriver or T-20 (6-lobe) driver depending on grip fasteners 	<ul style="list-style-type: none"> • Remove old grips and any glue residue • Install replacement suede grip patches • Set oar length as appropriate

Note: Microfiber suede grips are designed as a wearing item that will require regular inspection and maintenance. The main advantage of microfiber suede grips is that changing the patches is very easy and inexpensive, and provides a grip that performs well in a wide range of conditions. In our experience the average lifespan of suede patches during regular use is approximately one year, but is dependent on many factors such as heat, humidity, and cleanliness. Athletic tape applied to fingers is very abrasive to the suede material and will decrease the life of grip.

INSIDE SWEEP GRIP

Preparation

1. Support oars in V-blocks.
2. Review the transition graphic and note the three transition points on the oar handle. See illustration A.
3. Cut the old inside grip off with the utility knife, taking care not to cut the composite handle under the grip. Use the blade edge to remove as much glue as possible. See photo A. Gently sand the remaining glue off to create a smooth and clean surface.
4. Ensure the grip surface is smooth and free of glue and debris.

Transition Graphic

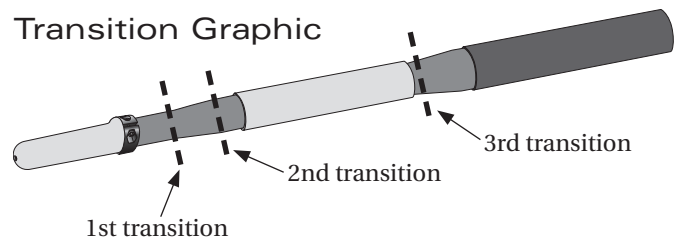


illustration A



photo A

Procedure

Follow SUEDE GRIP INSTALLATION SWEEP INSIDE GRIP procedure on page 1.

OUTSIDE SWEEP GRIP

Preparation

1. Support oars in V-blocks.
2. First note the setting on the length sticker before removing the grip, then remove the old grip by loosening the clamping screw and unscrewing the adjusting screw until it can be pulled off the handle. See illustration A.
3. Ensure the handle surface is clean and free of debris.

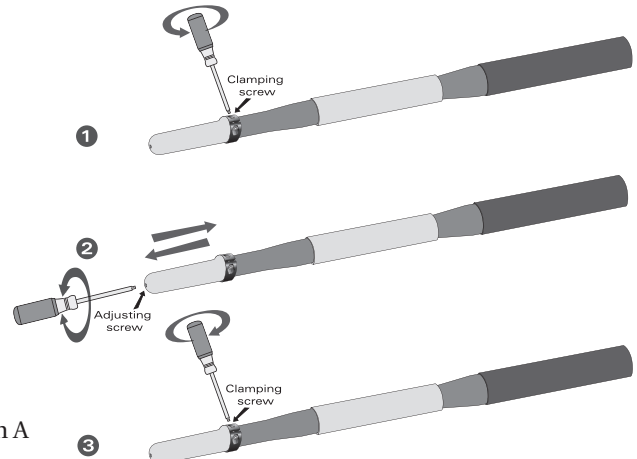


illustration A

Procedure

1. Screw the new grip onto the oar until you reach the same overall length as you had with the old grip.
Note: To ensure the adjusting screw engages the hole in the end plug, use the driver to push in on the adjusting screw while pushing the grip onto the handle. See illustration B.
2. Tighten the clamping screw.

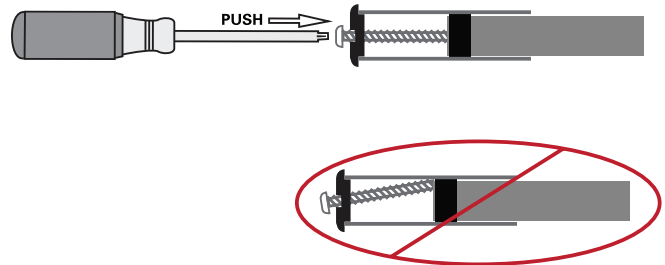


illustration B